

**Full
HYBRID
1080P**

NEW



ANALOG HIGH DEFINITION OVER COAX or CAT5e

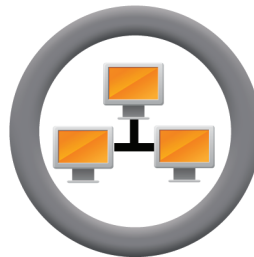
WATCHMAN

WATCHMAN AHD Series: UK-WMAHD04/08/16

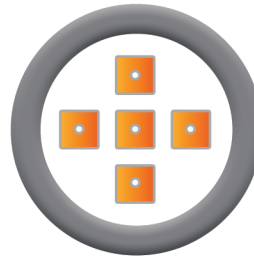
WATCHMAN AHD is a brand new premium hybrid system brought to you by Unitek. One of the many benefits to this technology is that while displaying crisp 1080p HD resolution, it maintains the long transmission distance that of an analog system (over 1000ft. with either cat5e or coax). Our AHD cameras are also fully hybrid, capable of switching between analog and 1080p resolution with a flick of a button. Unitek AHD is truly an innovation that both the big system integrators and the end-users alike can easily appreciate.



EZ-LINK
USER REMOTE ACCESS



EZ NETWORK
AUTO UPNP, AUTO DDNS



EZ-OSD INTERFACE
ON SCREEN DISPLAY



VMU SUPPORTED
VIDEO MANAGEMENT UNIT

www.unitekctv.com

**POWER
TECHNOLOGY
INC. 1.800.755.9068**



AHD Full HYBRID 1080P

ANALOG HIGH DEFINITION OVER COAX or CAT5e

WATCHMAN



FEATURES

Supports 1080P/720P/960H (AHD/Analog)

- Audio support
- Fast forward and backward playback up to 256 times
- Multi level user management (admin and 100 users account)
- HDD stability monitoring using S.M.A.R.T function
- e-SATA Support
- 6TB HDD support
- Easy DDNS using your own domain name or MAC address
- Dual network video stream (H.264)
- Remote DVR monitoring function
- Easy network setup using UPnP

REMOTE S/W (CMS)

- Mac & Windows 100% compatible CMS
- Support maximum 256 channels
- All operations are integrated in one CMS
- 1080p, 720p, 960H (AHD/Analog)
- Live, search, playback, backup, e-map, remote DVR configuration
- Supports two live mode for single or multi DVR
- Fast and easy remote DVR search
- Convenient remote DVR access using group and DVR list management
- More than two CMS can be operated on dual monitor

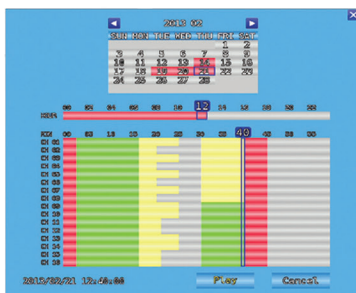
MOBIL

- iPhone, iPad, Android support
- 16 channel live monitoring & playback
- Audio support
- PTZ control
- Remote DVR relay control
- Landscape or portrait mode support



SPECIFICATION

ITEM		UK-WMAHD04	UK-WMAHD06	UK-WMAHD16
Video input	No. of Channel	4ch BNC	8ch BNC	16ch BNC
Video output	Monitor	1ch HDMI, spot, 1ch VGA		
Multitasking		Quadplex		
Recording	Resolution	1920x1280/ 1920x540/ 960x540/ 1280x720/ 1280x360/ 640x360/ 960x576/ 960x288/ 480x288		
	Max. Speed	60fps at 1080p (NTSC) 50fps at 1080p (PAL)	120fps at 1080p (NTSC) 100fps at 1080p (PAL)	240fps at 1080p (NTSC) 200fps at 1080p (PAL)
	Mode	Schedule, Event(Sensor, Motion Detection), Manual, Continuous, Continuous + Event		
Display	Resolution	1024 x768 , 1280 x 720, 1280 x 1024, 1440 x 900, 1920 x 1080		
Search	Mode	Quick, Calendar, Bookmark, Event (Sensor, Motion Detection), USB		
Playback	Speed	x1, x2, x4, x8, x16, x32, x64, x128, x256, field by field (forward, backward) x1/4, x1/2 Slow Motion (forward only), repeat A-B		
Audio Input		4ch		2ch
Audio Output		1ch		
Sensor Input		4 (NO/NC selectable)		
Alarm output(Relay)		1 Relay output		
Network	Speed & Type	10/100M (Static, DHCP, E-mail), UPNP, DDNS server available		
	Codec	Dual codec. (H.264)		
Storage	Bandwidth limit	Yes		
	SATA	Internal HDD 2EA or Internal HDD 1EA + e-SATA 1EA		
e-SATA				
Back-up		USB flash memory, network		
Password Protection		1 admin + 100 users		
Interface	PTZ Control	RS-485		
S/W upgrade		Network, USB flash memory		
Power source & Consumption		+12VDC/4A adaptor (100- 240VAC, 50Hz/60Hz, 60W)		
Dimension(mm)		320(W) x 330(D) x 70(H)		



< Search >



< CMS >



< Mobile >

